

DISINFECTANT WIPE

Our best-selling range of everyday cleaning wipes, Medipal Disinfectant Wipes offer great flexibility. Powerful combination chemistry delivers broad spectrum efficacy that's ideal for surfaces and non-invasive medical devices.

5 products in this range.



AT A GLANCE:

- ✓ Alcohol Free
- ✓ PHMB Free
- ✓ Dermatologically Tested

IDEAL FOR:

- ✓ Disinfecting and cleaning patient shared equipment
- ✓ Use where there is a high risk of infection
- ✓ Cleaning non-invasive medical devices prior to sterilisation



SKIN HYGIENE



HIGH LEVEL DISINFECTION



SURFACE CLEANING



SURFACE DISINFECTANT

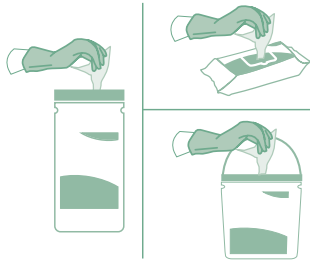
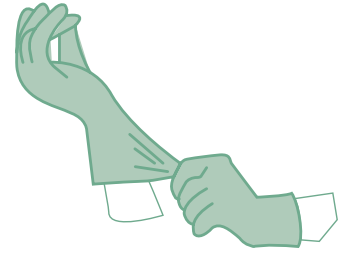


Scan for online factsheet
and safety data sheet

HOW TO USE:

STEP 1 | RISK ASSESSMENT

Please follow your agreed risk assessment policy guidelines regarding the use of PPE.



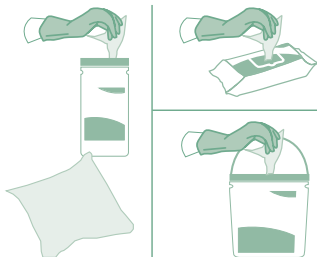
STEP 2 | WIPE SELECTION

Choose the dispenser type and dispense the wipe.

STEP 3 | S-SHAPE TECHNIQUE

Wipe the surface in an S Shape moving from clean to dirty. Use the wipe flat not scrunched.

Do not go over the same area twice with the same wipe.

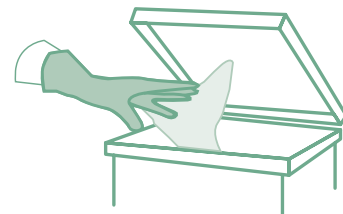


STEP 4 | FRESH WIPE

Use a fresh wipe if your wipe becomes soiled or dry.

STEP 5 | DISCARD

Discard used wipes in the appropriate waste bin following your local agreed guidelines.



Do not flush 



STEP 6 | LET DRY

Allow the surface to dry before use.

TECHNICAL DETAILS

”

Medipal's proprietary Tritex[®] material is made by bonding layers of spunbond and meltblown polypropylene fibres together in a high heat process. The addition of a hydrophilic coating means optimum and consistent liquid discharge.

CHEMICAL FORMULATION

Medipal Disinfectant Wipes use a high specification combination chemistry, effectively blending two disinfectant compounds, DDAC (a fourth generation Quat) and Triamine, to produce a highly efficacious, broad spectrum, alcohol free disinfectant.

MATERIALS

Tritex[®] material is made by bonding layers of spunbond and meltblown polypropylene fibres together in a high heat process before a hydrophilic coating is applied. This material is 100% synthetic.



High Strength

The material offers high strength in both directions – across and along the wipe.



Excellent Solution Retention

Ensuring even wetness throughout the wipe.



Very Low Linting

Low risk of leaving contaminating fibres on surfaces.



Efficient Solution Release

Active wipe ingredients are transferred to the surface rather than being trapped in the wipe material fibres.

Efficacy details

Effective Against	Test	Kill Time
BACTERICIDAL		
Acinetobacter Baumannii Nctc 12156	EN 13727	30 seconds
E. Coli (Esbl) Nctc 10418	EN 13727	30 seconds
E. Faecium Nctc 12201	EN 13727	30 seconds
E. Hirae Nctc 13383	EN 13727	30 seconds
Enterococcus Faecalis (Vre)	EN 13727	1 minute
	EN 13697	1 minute
Enterococcus Hirae	EN 16615	1 minute
	EN 13697	1 minute
	EN 14561	1 minute
Escherichia Coli	EN 13697	1 minute
K. Pneumoniae (Cpe) Nctc 7427	EN 13727	30 seconds
P. Aeruginosa Nctc 13359	EN 13727	30 seconds
Pseudomonas Aeruginosa	EN 16615	1 minute
	EN 13697	1 minute
	EN 14561	1 minute
S. Aureus (Mrsa)	EN 13727	1 minute
	EN 13697	1 minute
S. Aureus Nctc 10788	EN 13727	30 seconds
Staphylococcus Aureus	EN 16615	1 minute
	EN 13697	1 minute
	EN 14561	1 minute

Efficacy details

Effective Against	Test	Kill Time
MYCOBACTERICIDAL		
Mycobacterium Avium	EN 14348	1 minute
	EN 14563	1 minute
Mycobacterium Terrae	EN 14348	1 minute
	EN 14563	1 minute
VIRUCIDAL		
Adenovirus 5 <small>* These organisms represent Full Virucidal efficacy according to EN 14476 2013 + A1 2015 Annex A</small>	EN 14476	1 minute
Murine Norovirus <small>* These organisms represent Full Virucidal efficacy according to EN 14476 2013 + A1 2015 Annex A</small>	EN 14476	1 minute
Polio Virus <small>* These organisms represent Full Virucidal efficacy according to EN 14476 2013 + A1 2015 Annex A</small>	EN 14476	2 minutes
Vaccinia Ankara Virus <small>* This test covers all enveloped viruses according to EN 14476 2013 + A1 2015 Annex A</small>	EN 14476	1 minute
Coronavirus <small>*These organisms represent envelope virus efficacy according to EN 14476 2013 + A1 2015 Annex A</small>	EN 14476	1 minute
YEASTICIDAL AND FUNGICIDAL		
Candida Albicans	EN 16615	1 minute
	EN 13697	1 minute
	EN 13624	1 minute
	EN 14562	2 minutes
Candida Auris	EN 13624	1 minute



PRODUCTS WITHIN THIS RANGE

50 WIPE FLOW WRAP



Quantity: 50 per pack
24 packs per case

Product Code: S524110MPCE

200 WIPE FLOW WRAP



Quantity: 200 per pack
6 packs per case

Product Code: S522110MPCE

200 WIPE FLOW WRAP



Quantity: 200 per pack
6 packs per case

Product Code: S625110CE

350 WIPE BUCKET



Quantity: 350 per pack
4 packs per case

Product Code: W522110MPCE

200 WIPE BUCKET



Quantity: 200 per pack
4 packs per case

Product Code: W621110MPCE