



Simplicity,  
aesthetics and  
performance in  
your hands

G-ænial<sup>®</sup> A'CHORD

The advanced universal composite  
with unishade simplicity



Since 1921  
100 years of Quality in Dental

# G-ænial A'CHORD revolution from GC

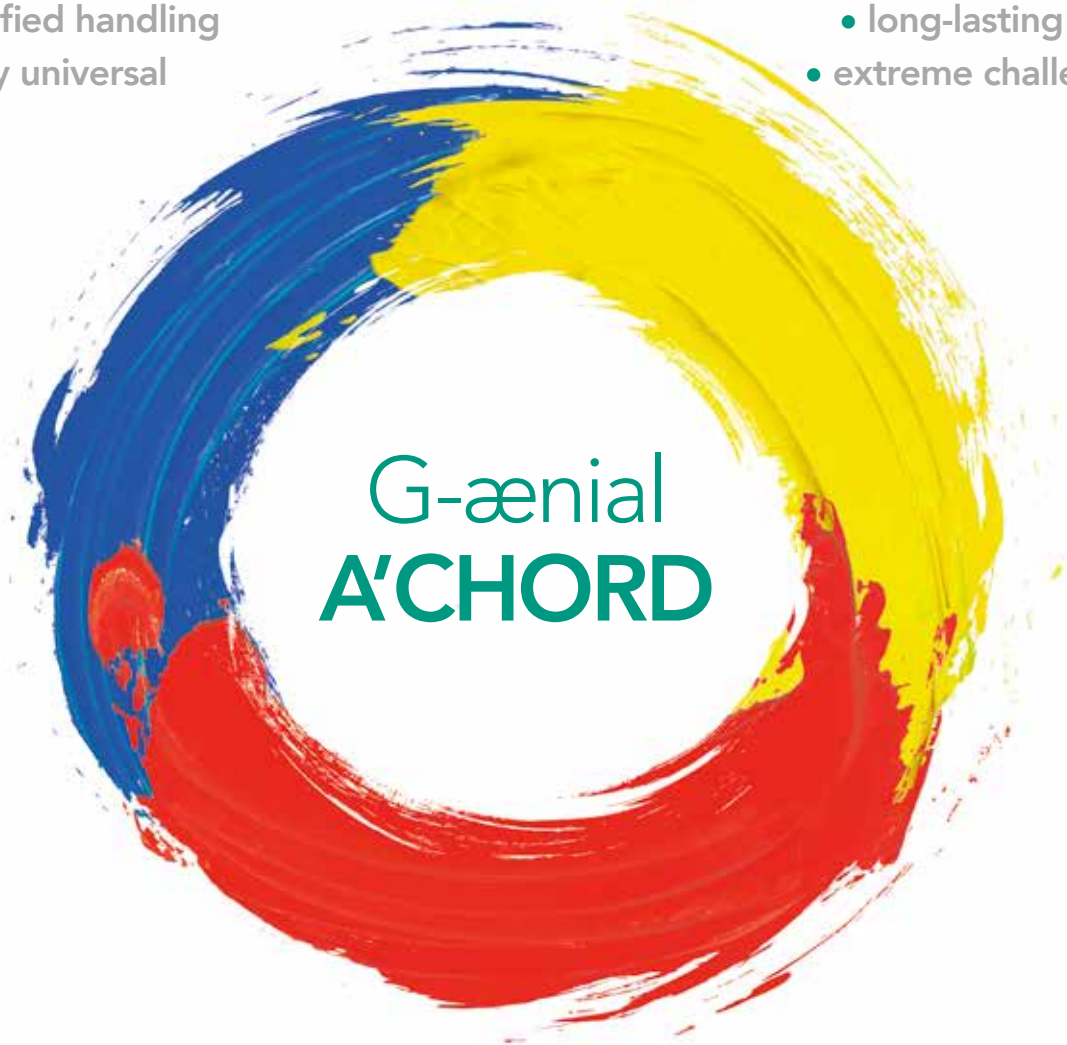
With more than 100 years of experience in serving dentistry and **over one billion composite restorations worldwide**, GC introduces its proprietary **High-performance Pulverised CERASMART (HPC)** filler and **Full-Coverage Silane Coating (FSC)** technologies with its latest universal composite G-ænial A'CHORD which brings together simplification, invisible fillings, natural fluorescence and **advanced technologies in one syringe**.

## A'CHORD Simplification

- simplified unishade system
- simplified handling
- simply universal

## A'CHORD Aesthetics

- natural fluorescence
- long-lasting gloss
- extreme challenges



## A'CHORD Revolutionary technology

- proprietary filler and coating
- high stain and wear resistance
- excellent radiopacity

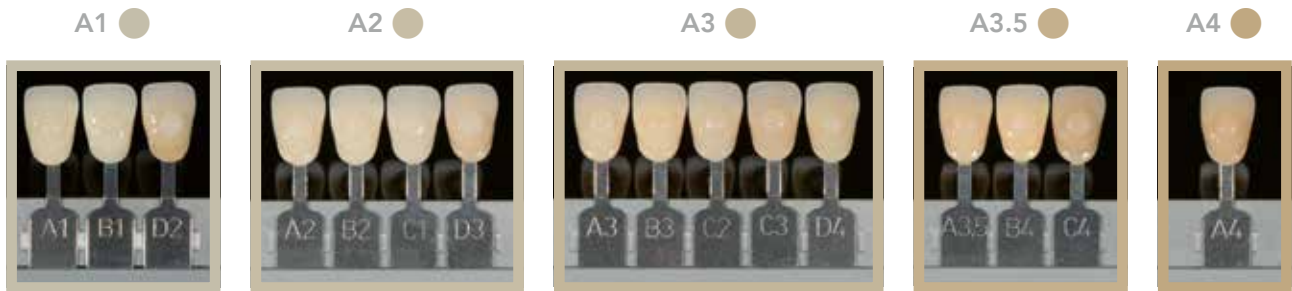
G-ænial A'CHORD is a **universal composite that delivers long-lasting invisible restorations**. Designed to save time and therefore cost, it brings together superior technology in a straightforward product. Now you can feel truly confident using a material with **effortless handling** even in challenging cases.

**Impress your patients with this simplified solution.**

# A'CHORD Simplification

## Simplified unishade

G-ænial A'CHORD always delivers more: a simplified unishade system of **5 core shades** that achieves the aesthetics of the 16 classic Vita shades **with ease**. With this reduced inventory you will save time and costs. Its unique filler technology mimics natural light reflection resulting in impressive invisible restorations.



## Simplified handling

G-ænial A'CHORD provides consistently simplified handling, whether sculpting with a hand instrument or using a brush. This is enabled by the non-sticky Bis-MEPP monomer and optimized fill-monomer combination of proprietary FSC and HPC technology (GC data on file).



## Simply universal

G-ænial A'CHORD offers the combination of aesthetics and strength for both anterior and posterior restorations in one straightforward package



*Courtesy of Dr A. Mak, Australia*



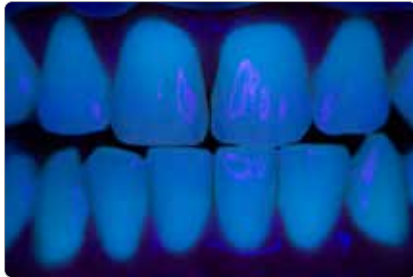
*Courtesy of Dr R. Asparuhov, Bulgaria*

# A'CHORD Aesthetics

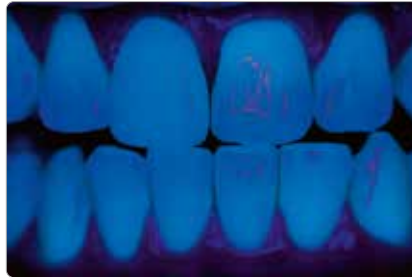
## Natural fluorescence

G-ænial A'CHORD creates a **beautifully invisible and naturally fluorescent** end result under any lighting conditions, including black light, giving patients a **truly confident smile**.

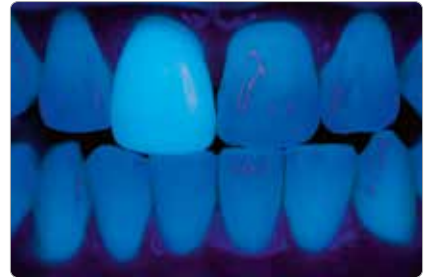
Near-UV 405 nm initial situation



G-ænial A'CHORD veneer on tooth 11



Conventional composite veneer on tooth 11



Courtesy of J. Tapia Guadix, Spain

## Long lasting gloss

G-ænial A'CHORD **polishes exceptionally and retains a high gloss** thanks to its specialised proprietary technology with uniform nano filler distribution and high filler load.

Time-saving results: The remarkable high gloss achieved with minimal polishing



## Invisible aesthetics even for extreme challenges

In addition to its 5 core shades G-ænial A'CHORD extends its portfolio with 2 cervical shades for elderly patients, 3 opaque for masking discoloration, 2 enamel for life-like translucency and 2 bleach shades for brighter smiles, making it possible to create invisible fillings even for extreme challenges.



Courtesy of Dr W. Boujema, France



Courtesy of Dr G. Benjamin, Germany

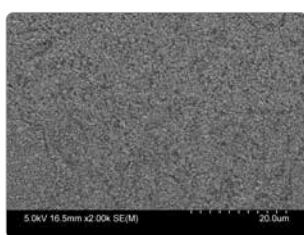
# A'CHORD Revolutionary technology

## Proprietary filler and coating

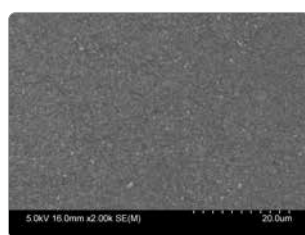
G-ænial A'CHORD represents another significant step forward in the advancement of composite materials. It is the combination of two remarkable proprietary technologies created by GC; **Full-Coverage Silane Coating (FSC)** and **High Performance Pulverized CERASMART (HPC)**. The result? The ideal synergy between advanced physical properties such as wear resistance\*, gloss retention\* and low discoloration<sup>1</sup> with simplified handling, providing the clinician excellent adaptation to the cavity preparation. Reducing placement time, it provides excellent marginal integrity and consistently yields natural looking restorations!

<sup>1</sup> Mizukami et al. IADR2020. Evaluation of Water Sorption and Colour Stability of Paste-Resin Composite. J Dent Res. 2020;99 Spec Issue A: #2471.  
\*Source: GC R&D, Japan, 2019. Data on file.

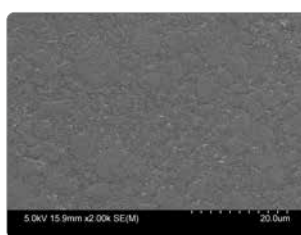
SEM Comparison of different Composite materials.



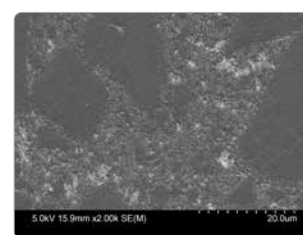
G-ænial A'CHORD



Tetric EvoCeram

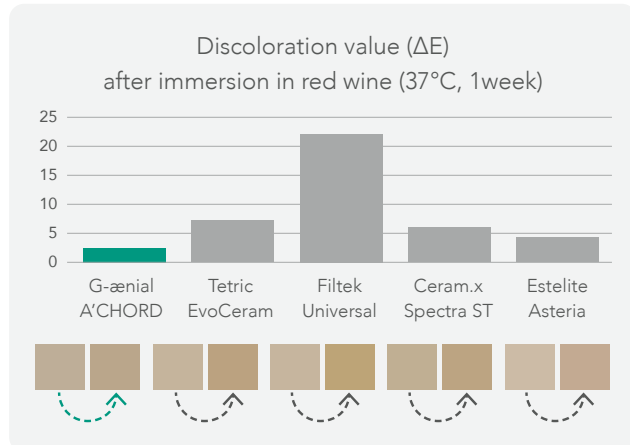


Filtek Universal



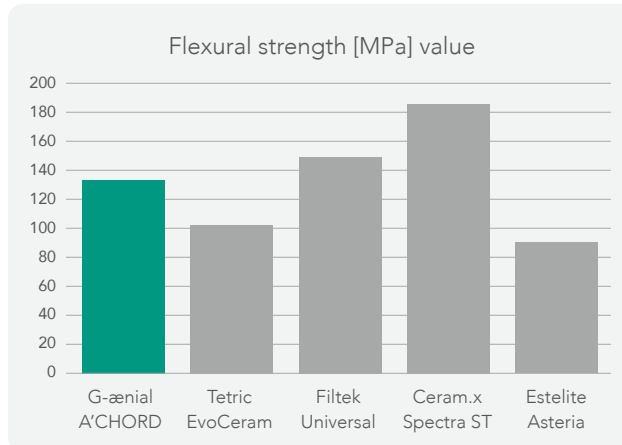
Clearfil Majesty ES-II

## G-ænial A'CHORD High Stain and Wear Resistance

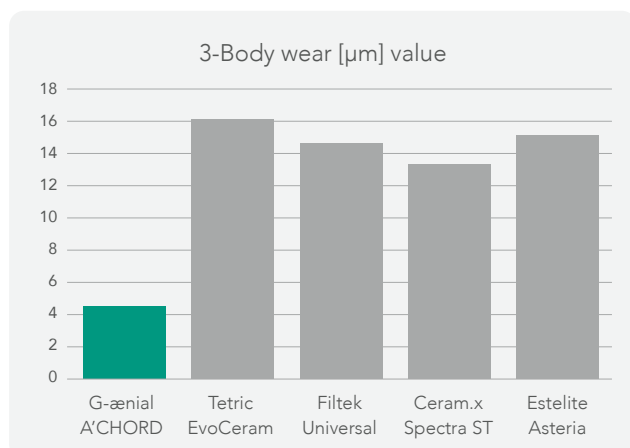


Source: GC R&D, Japan, 2020. Data on file.

## G-ænial A'CHORD High Strength and Radiopacity



Source: GC R&D, Japan, 2020. Data on file.



Source: GC R&D, Japan, 2020. Data on file.

Radiopacity (318 % Al) optimizes the radiographic follow-up over time.



Courtesy of Dr W. Boujemaa, France

Syringe (1/shade)	Unitip (15/shade)	Kit	Content
10006767	10006772	G-ænia A'CHORD Layering Kit	A2; A3; AO2; AE; JE
10006768	10006773	G-ænia A'CHORD Core Kit	A1; A2; A3; A3,5; A4
10006771		G-ænia A'CHORD Bleach Kit	BW, BOW,JE

Syringe 2.1ml/4g	Unitip 15 x 0.16mL	Refill	Category
10006739	10006753	G-ænia A'CHORD A1	Standard
10006740	10006754	G-ænia A'CHORD A2	Standard
10006741	10006755	G-ænia A'CHORD A3	Standard
10006742	10006756	G-ænia A'CHORD A3.5	Standard
10006743	10006757	G-ænia A'CHORD A4	Standard
10006744	10006758	G-ænia A'CHORD A5	Standard
10006745	10006759	G-ænia A'CHORD A6	Standard
10006747	10006761	G-ænia A'CHORD AO1	Opaque
10006748	10006762	G-ænia A'CHORD AO2	Opaque
10006749	10006763	G-ænia A'CHORD AO3	Opaque
10006751	10006765	G-ænia A'CHORD JE (Junior Enamel)	Enamel
10006752	10006766	G-ænia A'CHORD AE (Adult Enamel)	Enamel
10006746	10006760	G-ænia A'CHORD BW (Bleach)	Bleach
10006750	10006764	G-ænia A'CHORD BOW (Opaque Bleach)	Bleach



## Related products



**G-Premio BOND**  
Universal bonding agent



**G-ænia® Universal Injectable**  
High-strength Injectable restorative



**D-Light® Pro**  
Dual wave-length LED curing light

G-ænia A'CHORD is a trademark of GC. VITA, Tetric EvoCeram, Filtek Universal, Cera.x Spectra ST and Estelite Asteria are not trademarks of GC.

### GC EUROPE N.V.

Head Office  
Researchpark,  
Haasrode-Leuven 1240  
Interleuvenlaan 33, B-3001 Leuven  
Tel. +32.16.74.10.00  
Fax.+32.16.40.48.32  
info.gce@gc.dental  
<http://europe.gc.dental>

### GC UNITED KINGDOM Ltd.

Coopers Court Newport Pagnell  
Buckinghamshire  
MK16 8JS  
United Kingdom  
Tel. +44.1908.218.999  
Fax.+44.1908.218.900  
info.uk@gc.dental  
<http://europe.gc.dental/en-GB>

# 'GC'