

VOCO HIGHLIGHTS

Practice

#1/21
1.4.21 - 30.9.21

Easy
application
into the
sulcus

The cord from the capsule

VOCO Retraction Paste

Astringent paste for an effective temporary widening and dry gingival sulcus

- **Thin cannula with flexible tip** – easy and pinpoint application into the sulcus
- **Viscosity Change** – paste consistency varies during application and sulcus widening
- **Good visibility** – contrasty to the gingiva
- **A clean product** – quick and easy to spray off

NEW



REF 1012 Caps 25 × 0.3 g

save**
25%

REF 1013 Caps 100 × 0.3 g

VOCO Retraction Paste

ASTRINGENT PASTE FOR AN EFFECTIVE TEMPORARY WIDENING AND DRY GINGIVAL SULCUS



VOCO Retraction Paste – Retraction one step further

The temporary widening and isolation of the sulcus, including stopping bleeding are key tasks of a retraction paste. This creates the ideal conditions for successful classical or even digital precision impressions.

VOCO has thought one-step further for you in regards to the application: the outlet of the hygienic *SingleDose* compule is designed to be very thin, so the paste can be applied directly into the sulcus with pinpoint accuracy. Thanks to its soft and flexible plastic cap, the application is gentler on the tissue and therefore more comfortable for your patients than when working with metal cannulas or placing a cord.

Depending on how much pressure is applied to the paste, it has differentiated viscosity levels, the so-called “Viscosity Change”. The paste is easily expressible, flows well and can be applied with pinpoint accuracy with little pressure. The paste is stable in the sulcus – this leads to an effective temporary widening. After a short application time of 1 – 2 minutes, the high-contrasty VOCO Retraction Paste can be sprayed off well.



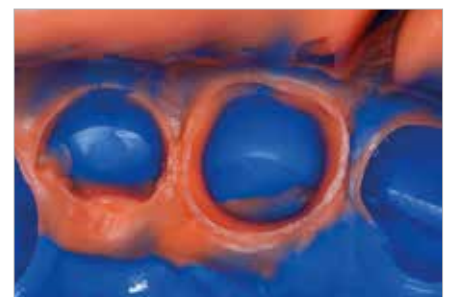
Before

After

Source: Dr. Jürgen Manhart



Applied VOCO Retraction Paste



Precise impression with V-Posil



FILLING MATERIALS / BONDING

VisCalor® bulk

Thermoviscous bulk fill composite

- Heating of the material makes it flowable for the application and then sculptable immediately afterwards (thermo-viscous-technology)
- Optimal flowing to margins and undercut regions – minimises risk of marginal gaps
- 4 mm bulk fill without covering layers
- Bubble-free application
- One universal and three aesthetic shades
- Slender cannula – ideal for hard-to-reach areas



save**
40%

REF 6062 Set Dispenser Caps 80 × 0.25 g (16 × universal, 16 × A1, 16 × A2, 32 × A3), VisCalor Dispenser

REF 9143 VisCalor Dispenser – Preheating device

save**
36%

REF 6063 Set Caps Warmer Caps 80 × 0.25 g (16 × universal, 16 × A1, 16 × A2, 32 × A3), Caps Warmer

REF 6065 Caps 16 × 0.25 g universal
REF 6066 Caps 16 × 0.25 g A1
REF 6067 Caps 16 × 0.25 g A2
REF 6068 Caps 16 × 0.25 g A3



World's first composite with thermo-viscous-technology



Grandio®SO Light Flow

Flowable nano-hybrid restorative material – low viscous

- Precise application thanks to an extra-fine cannula and therefore optimally suitable for hard-to-reach areas and small cavities



save**
30%

REF 2585 Set syringe 5 × 2 g (A1, A2, A3, A3.5, WO), accessories

Grandio®SO Flow

Flowable universal nano-hybrid restorative material – medium viscous

- Outstanding flow behaviour, universal application and precise application



save**
30%

REF 2720 Set syringe 5 × 2 g (A1, A2, A3, A3.5, WO), shade guide, accessories

Grandio®SO Heavy Flow

Flowable universal nano-hybrid restorative material – highly viscous

- Increased stability, i.e. no undesirable runoff and universal application



save**
30%

REF 2680 Set syringe 5 × 2 g (A2, A3, A3.5, WO, GA5), shade guide, accessories

Admira® Fusion

Universal nano-hybrid ORMOCER® restorative material

- The worldwide first purely ceramic-based restorative material
- By far the lowest polymerisation shrinkage (1,25 Vol.-%) and particularly low level of shrinkage stress in comparison to all conventional restorative composites
- Inert, so excellent biocompatible and extremely resistant to discolouration
- Excellent handling, simple high-lustre polishing procedure coupled with high surface hardness guarantee first-class long-term results
- Compatible with all conventional bonding agents

No classic monomers,
no residual monomers!



save
30%

- REF 2750 Set + bond syringe 5 × 3 g (A2, A3, GA3.25, A3.5, Admira Fusion x-tra), shade guide + Futurabond U *SingleDose* 20 pcs.
- REF 2780 Set + bond Caps 75 × 0.2 g (15 each of A2, A3, GA3.25, A3.5, Admira Fusion x-tra), shade guide + Futurabond U *SingleDose* 20 pcs.

4+1*

Syringe 3 g¹ Caps 15 × 0.2 g¹
¹ Item numbers of the shade variation can be found on www.voco.dental or in the main catalogue.

Admira® Fusion Flow

Flowable light-curing nano-hybrid ORMOCER® restorative material



save
30%

- REF 2816 Set syringe 5 × 2 g (A1, A2, A3, A3.5, W0) shade guide, accessories

4+1*

Syringe 2 × 2 g, various shades¹

Admira® Fusion x-tra

Nano-hybrid ORMOCER® restorative material, 4 mm



4+1*

- REF 2810 Syringe 3 g universal
REF 2811 Caps 15 × 0.2 g universal

Admira® Fusion x-base

Flowable nano-hybrid ORMOCER® base restorative material, 4 mm



4+1*

- REF 2812 Syringe 2 × 2 g universal

Futurabond® U

Dual-curing universal adhesive

- One bond for all cases – makes all other adhesives in the practice redundant
- Self-etch, selective-etch or total-etch – free choice for the practitioner
- Outstanding versatility of application
- Moisture tolerant



- REF 1571 *SingleDose* 50 pcs., accessories

save**
12%

- REF 1572 *SingleDose* 200 pcs., accessories

* if you order four packages via a VOCO dental consultant, you will receive another package for free. The free goods will be sent to you by VOCO.

ORAL CARE

CleanJoy®

Fluoride-containing tooth cleaning and polishing paste in three cleaning grades

- Stable, homogenous consistency, no splashing (2,000 - 3,000 r / min)
- No parabens
- Available in three abrasion grades, thus can be individually adjusted to each situation
- Traffic light coding: simple to use without confusion



Green paste (fine –

RDA values ² = 16)

Yellow paste (medium –

RDA values ² = 127)

Red paste (coarse –

RDA values ² = 195)

² RDA values (measured in accordance with DIN EN ISO 11609)

Tube 100 g

	fine	medium	coarse
Mint	REF 2090	REF 2091	REF 2092
Caramel	REF 6090	REF 6091	REF 6092
Cherry	REF 6098	REF 6099	REF 6100

save**
33%

Tube 3 × 100 g mixed (fine, medium, coarse)

Mint	Caramel	Cherry
REF 2993	REF 2994	REF 2992

save**
25%

Tube 4 × 100 g fine

Mint	REF 2089
------	----------

SingleDose 200 × 2 g

	fine	medium	coarse
Mint	REF 2096	REF 2097	REF 2098
Caramel	REF 6094	REF 6095	REF 6096
Cherry	REF 6102	REF 6103	REF 6104

VOCO Profluorid® Varnish

Fluoride-containing dental desensitising varnish (5 % NaF)

- Fast desensitisation and fluoride release (5 % NaF \pm 22,600 ppm fluoride)
- Easy to apply – moisture tolerant
- Available in seven pleasant flavours
- Economical application in thin layers, high yield
- Esthetic, tooth-shaded varnish



SingleDose 50 × 0.40 ml

Melon	Caramel	Cherry
REF 1269	REF 2226	REF 2227
Mint	Bubble Gum	Cola Lime
REF 2228	REF 2238	REF 2240
Pina Colada		
REF 2242		

save**
25%

SingleDose 200 × 0.40 ml

Melon	Caramel	Cherry
REF 1271	REF 2229	REF 2230
Mint	Bubble Gum	Cola Lime
REF 2231	REF 2239	REF 2241
Pina Colada		
REF 2243		

Application



SingleDose 48 × 0.40 ml

Mixed	REF 2225
-------	----------

Contains
all flavours for
testing

Bifix® Hybrid Abutment

Universal, dual-curing luting composite for intraoral and extraoral application

- All-in-one – permanent luting of all known dental materials
- Highest flexibility – intraoral application in the practice and extraoral in the laboratory
- High aesthetic – the perfect masking of dark substrates with highly opaque shades
- With Try-In pastes – precise shade simulation for hybrid abutments, abutment crowns and core treatments

NEW



save**
30%

REF 2995 Implant set mixed – matches REF 2410 + 2412 + 2413 (3 x QuickMix syringe 10 g, 3 x Try-In syringe 2.5 g, accessories)

REF 2411 QuickMix syringe 10 g (universal HO)
REF 2412 QuickMix syringe 10 g (white HO)
REF 2413 QuickMix syringe 10 g (translucent)
+ each incl. Try-In syringe 2.5 g, accessories

save**
18%

REF 2410 Implant Set QuickMix syringe 10 g (universal HO), Try-In syringe 2.5 g, Ceramic Bond bottle 5 ml, Futurabond U SD 5 pcs., accessories

V-Posil

Precision impression material, VPS

- Highly hydrophilic A-silicone for maximum precision
- Long working time combined with a short intraoral setting time
- Exceptional toughness and recovery after deformation ensure safety during or after removal
- Good hydrophilicity, even after setting, renders pouring and thus the prosthetic restoration perfect



Putty Fast / Heavy Soft Fast / Mono Fast



save**
15%

Starter-Set Putty Fast / Light Fast
REF 2991

Putty Fast Cartridge 2 x 380 ml
Light Fast Cartridge 2 x 50 ml

Starter-Set Heavy Soft Fast / Light Fast
REF 2985

Heavy Soft Fast Cartridge 2 x 380 ml
Light Fast Cartridge 2 x 50 ml

Starter-Set Mono Fast / Light Fast
REF 2987

Mono Fast Cartridge 2 x 380 ml
Light Fast Cartridge 2 x 50 ml

save**
15%

Starter-Set Putty Fast / Light Fast
REF 2984

Putty Fast Jar 2 x 450 ml
Light Fast Cartridge 2 x 50 ml

**compared with individual purchase

YOUR ORDER

Please contact your dental depot or your VOCO dental consultant to order the VOCO Highlights presented here. Offers are only valid at participating retail partners. Special prices offered by your depot are always taken into consideration.

This brochure was handed out by: