

STRATA-G™

Sectional Matrix System

NEW!

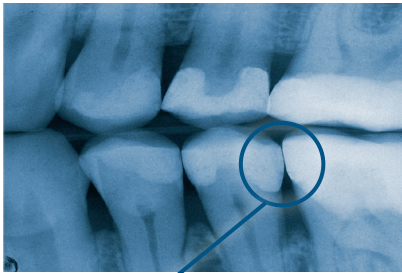


Garrison
Dental Solutions

STRATA-G™

Sectional Matrix System

Why should you use a Sectional Matrix System?



Strata-G™ Sectional Matrix System

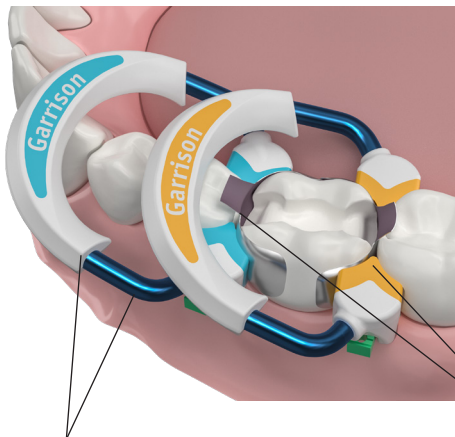
- + Rings produce optimal tooth separation for excellent, tight contacts
- + Bands with pronounced curvature for anatomically correct contacts
- + Contacts at the height of contour
- + Operator-friendly retaining system
- + No post-processing necessary
- + 26 years of experience in sectional matrix systems combined in the Strata-G sectional matrix system

NEW!

STRATA-G™

Sectional Matrix System

Now faster and more predictable!



Reliable, tight contacts

Rings made of drawn-wire nickel titanium plus PEEK produces consistent separating pressure longer!

Ultra-durable PEEK—increases toothseparating pressure and longevity.

Faster, less frustrating Class IIs

The Strata-G™ rings, bands and wedges combine for a 270° Seal™ for ultimate flash control.

The rings won't spring off the tooth thanks to their retentive tips, and the amazing green Wide Preparation ring makes tough wide preps no problem.

Easier, more predictable contours

Marginal ridge enhancements built into the matrix bands AND rings help provide that finishing flair!

Strata-G™ forms a 270° Seal™ for ultimate flash control.

STRATA-G™

Sectional Matrix System

Perfect for dentists who want to get a complete set of equipment.

SG-KSH-11
Price: € 789,00



SG-KSH-11

All Strata-G™ sets have a 60-day money-back guarantee.**

Part No.	Description	Price
SG-KSH-11	1x Strata-G™ Ring short blue,	€ 789,00
Professional Set	1x Strata-G™ Ring long orange,	
	1x Strata-G™ Ring wide green,	
	50x Strata-G™ matrix bands with non-stick coating,	
	5 sizes (10x each SG050, SG100, SG175, SG200, SG300),	
	50x Strata-G™ Firm matrix bands,	
	5 sizes (10x each FXH100, FXH150, FXH175, FXH200, FXH300),	
	80x Strata-G™ wedges, 4 sizes (20x each SGYL, SGBL, SGOR, SGGR),	
	1x Ring placement forceps FXP01, 1x matrix band holder BFA-1,	
	1x 5-in-1 multi composite instrument TN009,	
	10x VariStrip™, 5x Margin Elevation matrices	

3

**If you don't like the set, simply send it back to us via your depot and you will receive a full credit.

STRATA-G™

Sectional Matrix System



SG-KS-00

NEW!

Enough bands/wedges included in the kit to make the most of the 60 day money back guarantee.

SG-KS-00
Price: € 544,00

All Strata-G™ sets have a 60-day money-back guarantee.**

Part No.	Description	Price
SG-KS-00	1x Strata-G™ Ring short blue,	€ 544,00
Starter Set	1x Strata-G™ Ring long orange,	
	1x Strata-G™ Ring wide green,	
	100x Strata-G™ matrix bands with non-stick coating,	
	5 sizes (20x each SG050, SG100, SG175, SG200, SG300),	
	80x Strata-G™ wedges, 4 sizes (20x each SGYL, SGBL, SGOR, SGGR),	
	1x Ring placement forceps FXP01	

STRATA-G™

Sectional Matrix System

NEW!

Perfect for avid users of Garrison Dental Solutions' previous products.

SG-KS-40
Price: € 473,00



SG-KS-40

All Strata-G™ sets have a 60-day money-back guarantee.**

Part No.	Description	Price
SG-KS-40	1x Strata-G™ Ring short blue,	€ 473,00
Standard Set	1x Strata-G™ Ring long orange,	
	1x Strata-G™ Ring wide green,	
	50x Strata-G™ matrix bands with non-stick coating,	
	5 sizes (10x each SG050, SG100, SG175, SG200, SG300),	
	40x Strata-G™ wedges, 4 sizes (10x each SGYL, SGBL, SGOR, SGGR),	
	1x Ring placement forceps FXP01	

5

**If you don't like the set, simply send it back to us via your depot and you will receive a full credit.

STRATA-G™

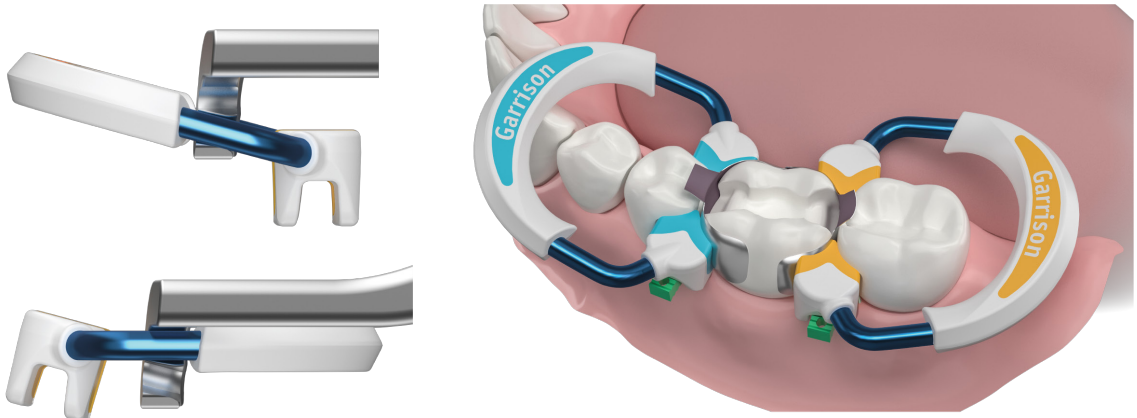
Sectional Matrix System

Choose a Strata-G™ sectional matrix system set and ...

... you will receive your Strata-G™ set including the 60-day money-back guarantee. During this time you can test all components of the set. If you are not satisfied, simply return the set to us via your depot and you will receive a full credit.

... Benefit from more than 26 years of world-leading innovation in sectional matrix systems

Rings can now be placed in reverse or butterfly placement



STRATA-G™

Sectional Matrix Rings



The green Strata-G™ ring for wide cavities

- Holds even when cusps are missing.
- Especially good for large cavities.
- The wide silicone tips prevent the matrix from being pressed into the cavity.

Part No. SG600 (2 pieces / pack)



The orange Strata-G™ ring - ring metal now made of Nitinol

- Drawn nickel-titanium wire - strong and elastic at the same time.
- Ultra-Grip™ retention tips prevent all Strata-G™ rings from slipping off.
- Holds even on large molars.

Part No. SG500 (2 pieces / pack)



The blue Strata-G™ ring is now even easier to open

- Optimal adaptation to the marginal ridge due to improved StrataBond™ silicone.
- Especially suitable for short/ malpositioned teeth and in pediatric dentistry.
- Also holds on a rubberdam clamp or distally on the canine.

Part No. SG400 (2 pieces / pack)



Part No.	Description	Price
SG600	Strata-G™ Ring Wide Prep green, 2 rings/pack	€ 234,00
SG500	Strata-G™ Ring Tall orange 2 rings/pack	€ 234,00
SG400	Strata-G™ Ring Short blue 2 rings/pack	€ 234,00
SGR01	Strata-G™ Ring Pack (1 of each ring)	€ 344,00
FXP01	Ring Placement Forceps	€ 97,00

NEW!

STRATA-G™

Sectional Matrix Rings

Longer lasting by design

Advanced materials and design combine to produce our longest lasting, most predictable separator ring ever!



Strong tooth separation yet easier to open

Nitinol drawn-wire nickel titanium is aligned at the molecular level for superior performance yet requires less effort to open. Garrison's proprietary StrataSet™ treatment of the Nickel-Titanium wire maximizes the longevity of this advanced material. The rings are now easier to open and hold their tension longer.

More uses

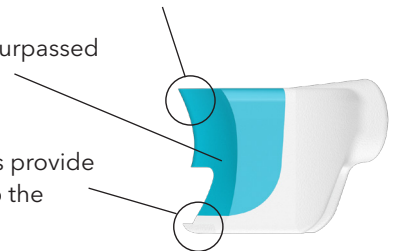
The PEEK ultra-durable reinforcement on the back of the ring allows Strata-G™ to retain a higher percentage of initial strength for much longer than non-reinforced rings. Proprietary StrataBond™ silicone/PEEK tips withstand hundreds of applications.

Improved anatomy - Unbeatable grip

Enhanced marginal ridge guides and supports matrix bands.

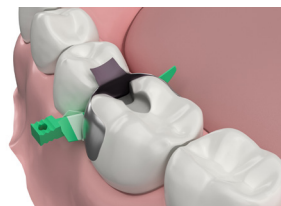
trataBond™ silicone for unsurpassed flash control.

Ultra-Grip™ retention extensions provide tenacious grip and are gentler to the papilla.



STRATA-G™

Sectional Matrix Bands



	bicuspid	bicuspid with deep cervical preparations	bicuspid and small molars	molars	molars with deep cervical preparations
Strata-G™ matrix bands with non-stick coating					

0,038 mm thick

Height

3.5 mm

4.5 mm

5.5 mm

6.5 mm

7.5 mm

Part No. **SG050**

SG100

SG175

SG200

SG300

Qty. 100 pcs.

100 pcs.

100 pcs.

100 pcs.

100 pcs.

Price **€ 109,00**

€ 109,00

€ 109,00

€ 109,00

€ 109,00



Full band kit including
all band sizes, 400 bands
(80x each SG050, SG100,
SG175, SG200, SG300)

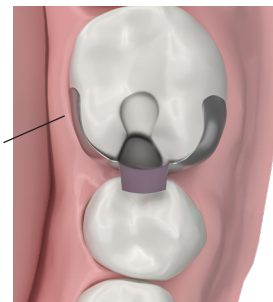
SGB01 € 375,00

Full band kit including
all band sizes, 200 bands
(40x each SG050, SG100,
SG175, SG200, SG300)

SGB02 € 198,00

Easy removal of the matrix bands thanks to the non-stick coating, which reduces adhesion to the composite by an impressive 92%.

Improved marginal ridge design due to stronger pre-contouring at the occlusal band part.





STRATA-G™

Sectional Matrix Bands

Anatomy top to bottom

Five sizes of super-thin stainless steel in both dead-soft and firm ensure you have the best matrix band to restore every case.



Optimized marginal ridge

trata-G™ Bands provide shape and guidance for developing the marginal ridge of Class II restorations without blocking your access.



ProfileBooster™ subgingival apron

Achieving a natural emergence profile in challenging cervical areas is easy with Strata-G™ Bands - it's built right in!

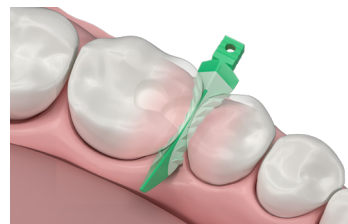


- Non-stick coating and color coded
- Easy placement tabs

- Dead-soft and only 0.038mm thin
- NEW pedodontic size!

STRATA-G™

Sectional Matrix Wedges



Strata-G™ wedges

X-small, yellow ●	Small, blue ●	Medium, orange ●	Large, green ●
----------------------	------------------	---------------------	-------------------



Part No.	SGYL	SGBL	SGOR	SGGR
Qty.	100 pcs.	100 pcs.	100 pcs.	100 pcs.
Price	€ 59,00	€ 59,00	€ 59,00	€ 59,00



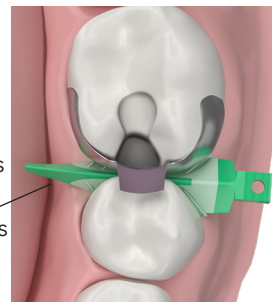
Full wedge kit including
all wedge sizes, 400 wedges
(100x each SGYL, SGBL,
SGOR, SGGR)

SGK4 € 203,00

Full wedge kit including
all wedge sizes, 200 wedges
(50x each SGYL, SGBL,
SGOR, SGGR)

SGK4-M € 107,00

Smooth tunnel
design and
rounded edges
glide over the
papilla with less
trauma.



NEW!

STRATA-G™

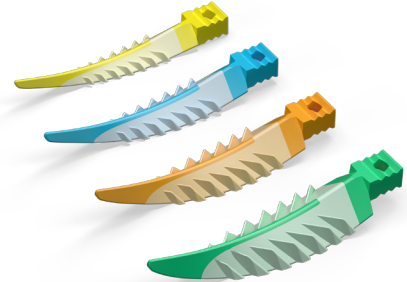
Sectional Matrix Wedges

Flexibility for a better cervical seal

Strata-G™ Wedges utilize Soft-Face™ materials and advanced design to promote a better fit.

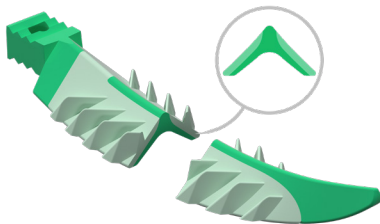
No back-out

Soft retentive fins smoothly fold down during wedge insertion and spring back when clear of the interproximal space, locking Strata-G™ Wedges in place.



A better seal by design

The inverted V shape sits lower and seals deeper interproximally while flexible side walls and Soft-Face™ TPE over-mold allow Strata-G™ Wedges to easily adapt to concavities and irregularities.



Stack them up

The smooth tunnel design easily accommodates stacking of wedges. This feature is extremely helpful in cases of gingival recession or when simultaneous wedging from the buccal and lingual is desired.





Sectional Matrix System

Technique for Class II restorations utilizing Strata-G™ Soft Face™ Rings

1. **Place rubber dam.** Isolation of the area helps to prevent contamination from blood and saliva. As with many dental procedures, aspiration of small parts is a valid concern.
2. **Prepare tooth with conservative Class II preparation.**
3. **Place Strata-G™ sectional matrix band.** Select a matrix band that most closely approximates the occlusogingival height of the tooth. The Grab-Tab should be oriented toward the occlusal margin and may be bent over the adjacent tooth after placement. (figure 1)
4. **Insert Strata-G™ wedge.** Keep a finger on the matrix band to prevent the wedge from dislodging the band during insertion. Wedge firmly, a high viscosity resin packed into the preparation may displace the band away from the tooth. (figure 2)
5. **Apply the Strata-G™ Soft Face™ ring retainer.** Select a retainer ring that is appropriate for the embrasure and tooth being restored. Spread it with the Garrison Premier Ring Placement forceps and place it over the wedge. (figure 3)
6. **Very Important:** Push the matrix band firmly into contact with the adjacent tooth in the desired contact area.
7. **Use your preferred etching,** disinfecting and bonding technique following manufacturer's instructions. Apply your preferred composite resin following manufacturer's instructions.
8. **Remove the ring, wedge and band.**
9. **Contour and polish the restoration.**



Figure 1

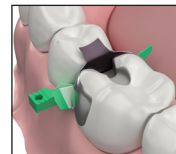


Figure 2

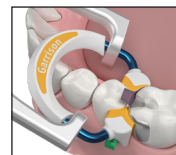


Figure 3

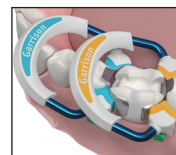


Figure 4

Stacking of Rings & MOD Restorations

The orange tipped and blue tipped versions of the Strata-G™ Soft-Face Rings are angled to allow stacking of rings for performing M.O.D.s and multiple-tooth restorations. (figure 4)

Alternatively, the Garrison Premier Ring Forceps (FXP01) allow for reverse, or 'butterfly', placement of the distal ring



Contact form

By fax: +49 (0) 2451 971-410

By phone: +49 (0) 2451 971-409

E-Mail: info@garrisondental.net

☐ **Order:** (will be supplied by your dental depot)

Quantity	Part No.	Unit price in €	Total price in €
	SG-KSH-11 - Strata-G™ Professional Set	€ 789,00	
	SG-KS-00 - Strata-G™ Starter Set	€ 544,00	
	SG-KS-40 - Strata-G™ Standard Set	€ 473,00	

Practice _____

Dental Depot _____

No. Street _____

in _____

Town/City _____

Date/Signature

Postcode _____

Phone _____

Garrison Dental Solutions • Carlstrasse 50 • D-52531 Uebach-Palenberg • Germany

Tel. +49 (0)2451 971-409 • Fax +49 (0)2451 971-410 • E-Mail: info@garrisondental.net • www.garrisondental.com

Garrison
Dental Solutions

Garrison

Dental Solutions

Garrison Dental Solutions

Carlstrasse 50

52531 Uebach-Palenberg

Germany

Phone +49 (0)2451 971-409

Fax +49 (0)2451 971-410

E-Mail: info@garrisondental.net

Web: www.garrisondental.com

